



Sustainable Aviation

Rottnest Island Airport proposal

Fly On E is laying the foundations of electric aviation in Australia.

Electric aircraft currently available in Australia are now in operation in WA on our early network of charge nodes, proving the viability and capability of electric aviation in its current capacity (as the perfect trainer and recreational sports aircraft solution).

There are electric aircraft currently operating in 3 Australian states with a strong growth forecast of LSA and 3-9 seat GA aircraft.



WADJEMUP ISLAND ELECTRIC AVIATION CHARGE NODE

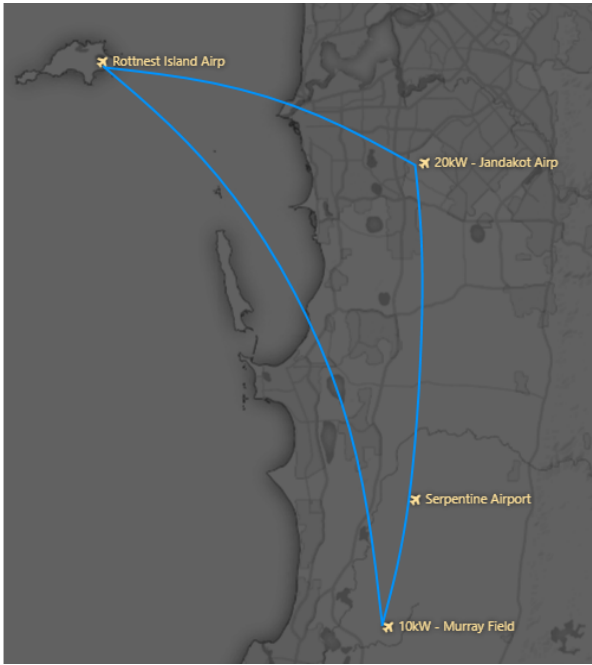
Wadjemup (Rottnest) island is the perfect use case for electric aviation.

Due to its close proximity to the primary air traffic point of origin, Jandakot airport, Electric aircraft have no trouble completing the route safely at full payload capacity. FlyOnE Sustainable aviation proposes to install a demonstration charger at the Rottnest Island airport to support charging of the electric aircraft that are currently operating from Jandakot and Murray field airport to complete Australia's first proof of concept electric aviation network.

An electric aircraft charge node at Rottnest island would create the **WORLD'S FIRST** electric aircraft enabled island airport.

The demonstration level would allow recreational electric aviators to visit the island, complete a partial or full charge cycle to ensure safe levels of onboard energy for the return to Rottnest island.

There are currently 3 electric aircraft that would access this network, this would provide a proof of concept for an upgrade to a commercial operations capable charge node for the first 4 seat electric air taxi service to commence operations to the island.



Renewable Surplus

We are more than happy to only charge at peak solar times when the 600kW of solar panels are operating at their full capacity.

We have observed the Rottneest Island Energy overview reporting system by Hydro Tasmania to be expunging up to 35kW of energy at peak solar times. Our demonstration charger only requires a maximum of 19kW, but can be set to charge at lower levels. By charging the aircraft at peak solar times, we will be able to use energy that is otherwise lost to wastage.

We require only to fit a 3 phase power outlet (at our cost) At the main power box in the Airport terminal. This space is also large enough and accessible enough to house the charger which is easily movable on wheels to be able to roll it out to the aircraft on the apron when charging is required. The charger leads can accommodate 10M of distance between the Aircraft and the proposed outlet.

We expect to use this charger 1-2 times per week for demonstration, test and recreational purposes and to generate media engagement for the island as the **world's first Electric aviation enabled island airport**. We are willing to make this investment in the island to gather the test data and operational experience we need to launch commercial electric air taxi operations in 2024.

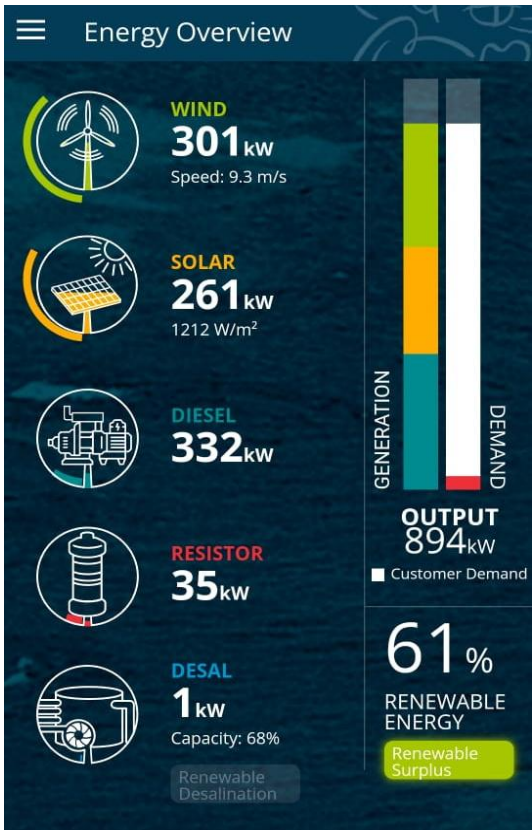
Our Stage 1 investment is...

Electrician fee and outlet hardware.....	\$ 2000.00
20kW Electric Aircraft Charger.....	\$ 29000.00
Logistics	\$ 500.00
Total	\$ 31500.00

FlyOnE proposes to install a demonstration charger at Rottneest Island airport at our expense to provide an evaluation platform for a later upgrade to commercial electric aircraft operations.

The charger hardware is around the size of a piece of luggage, at peak current, the charger will draw 19.6kW of power, but we can moderate the current draw to easily charge at half or even a quarter of that level if required by the RIA.

We have had the grid hardware inspected at Rottneest Island airport and our electrician confirms the grid can support the required 32AMP 3 phase outlet in the airport building, attached to a new outlet at the main power box.





Further to the charge node for electric aircraft operators, we would like to house a zero emissions 'Airport shuttle' pedal vehicle. At the Airport for Electric Aircraft operators to shuttle to and from the airport and the village. We would like to house the shuttle within the shelter awning of the airport in front of the ground side roller door where there is a power outlet for trickle charging. The vehicle would be locked but accessible to the electric aircraft operators and passengers.



Activating this charge node sets an amazing precedent for electric aviation in Australia and presents us with the perfect proof of concept to show the Australian tourism and transport industries how we can be decarbonising air transport services with new technologies.

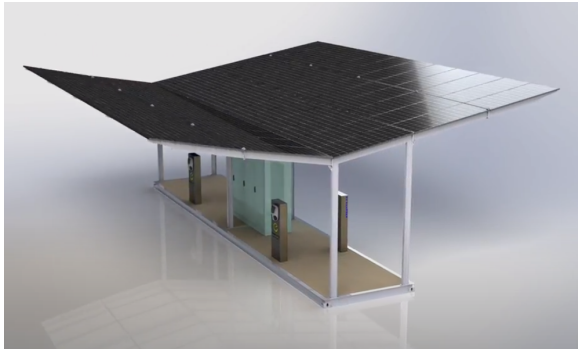
From 2023 onwards, FlyOnE will be able to offer commercial electric air taxi services on select routes between Jandakot, Rottnest Island and Murray Field. For second and third generation electric aircraft, a commercial grade charger is required.



Similar to the fuel dump left at the airport by other operators, FlyOnE proposes to have an Airside 'electric refueling' station at the island to service these commercial air taxi operations.

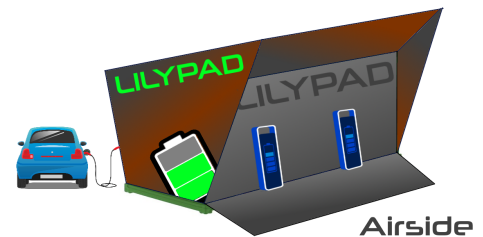
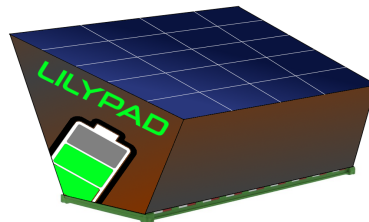


COMMERCIAL ELECTRIC AVIATION CHARGE NODE



The Stage 2 commercial grade charge node hardware could take many forms depending on the available structures at the location, leasing arrangements and aircraft access to the chargers.

One of the OFF GRID modular designs we would like to pursue for sites such as Murray Field and Rottnest Island.. As well as being deployable anywhere for EV (road vehicle) charging is the 'Container build' or 'Skid Build'. The container build can be 80% built at our central facility before deployment and could be easily re-deployed if required.



World's first Electric aviation enabled island airport.

To enable higher grade commercial electric aircraft operations with the next stage 4 seat electric aircraft after successful trial operations in the recreational sector, we are wanting to invest in a non permanent solar energy collection and storage structure and lease space at the airport as a 'Tenant' of the island.

Our Stage 2 investment total is...

Hardware.....	\$	140000.00
80kW Electric Aircraft Charger.....	\$	79000.00
Logistics	\$	1500.00
Annual lease fee to RIA	\$	(Unknown)

Total \$ 225000.00

The Rottnest island proposal is supported by the R.E.S.T advisory committee.

The **R**enewable **E**nergy and **S**ustainable **T**ransport advisory committee was formed in 2022 to assist with the development and implementation of renewable energy sources and use cases for business and transport in Western Australia.

The Rottnest (Wadjemup) Island electric aviation charge node is supported and endorsed by the R.E.S.T Advisory committee whose members include..



Korum E

CEO and founder of FlyOnE Sustainable Aviation

Korum E has a long history of customer fulfillment and business development in the consumer electronics field.

A passion for sustainability, engineering, and aviation has resulted in FlyOnE, Australia's premier sustainable aviation operator and supplier.

Korum is the founding member of the R.E.S.T Advisory committee, a group formed to help navigate the pushback and barriers associated with the rollout of innovative decarbonised services in the energy and transport sector.

Address: Unit 6, 320 Great Eastern Highway, Ascot, WA

Telephone: 02 90001167

Email: korum.e@flyone.com.au

<https://flyone.com.au/about-us/>



Hon Reece Whitby MLA

Minister for Environment; Climate Action; Racing and Gaming
Contact Information

Reece Whitby was elected as the Member for Baldivis in March 2017 - becoming the first local member for the new electorate.

Reece was re-elected as the Member for Baldivis in March 2021. He was sworn in as the Minister for Emergency Services; Racing and Gaming; Small Business; Volunteering in the McGowan Government on 19 March 2021. He became Minister for Environment; and Climate Action on 21 December 2021, before adding Racing and Gaming on 14 December 2022.

Address: 8th Floor, Dumas House, 2 Havelock Street, WEST PERTH WA 6005

Telephone: 61 8 6552 6300 Email: Minister.Whitby@dpc.wa.gov.au

<https://www.wa.gov.au/government/premier-and-cabinet-ministers/reece-rwhitby>



Senator Dorinda Cox

GREENS SENATOR. YAMATJI NOONGAR WOMAN. MUM.

Senator Dorinda Cox is a Yamatji-Noongar woman with a strong record of working for social justice in her community; locally, globally and nationally. Dorinda is the mother of two daughters and small business owner. Dorinda has over 20 years' experience working in government and non-government sectors and has made significant contributions to policy and advocacy in the areas of domestic violence, child protection and Aboriginal Justice.

Address: Unit 11, Level 2, 440 William Street, Perth WA 6000

Telephone: (08) 9228 3277 Email: senator.cox@aph.gov.au



**Ms Christine Maelisa Tonkin MLA BA; MBA;
GradDipProcurementMgt**

House: Legislative Assembly - Member for Churchlands Party:
Australian Labor Party

Elected to the Forty-First Parliament for Churchlands on 13 March 2021, in succession to Sean Kimberley L'Estrange (defeated).
Standing Committees: Member, Joint Standing Committee on Delegated Legislation from 26 May 2021. Sessional Committees: Member, Parliamentary Services Committee from 12 May 2021.

Electorate Office: Unit 3A/151 Herdsman Parade Wembley WA 6014 Telephone: 9383 7120

Email: Christine.Tonkin@mp.wa.gov.au

<https://www.parliament.wa.gov.au/Parliament/Memblast.nsf/WAllMembersFlat/Tonkin,+Christine+Maelisa?opendocument>



Mr Yaz Mubarakai MLA BCom; MCom; MMBF; DipIT

Parliamentary Secretary to the Minister for Education; Aboriginal Affairs; Citizenship and Multicultural Interests

Parliamentary Secretary to the Minister for Finance; Lands; Sport and Recreation; Citizenship and Multicultural Interests from 19 March 2021 to 21 December 2021. Parliamentary Secretary to the Minister for Finance; Aboriginal Affairs; Racing and Gaming; Citizenship and Multicultural Interests from 21 December 2021 to 14 December 2022. Parliamentary Secretary to the Minister for Education; Aboriginal Affairs; Citizenship and Multicultural Interests from 14 December 2022.

Electorate Office: Suite 11, The Professional Centre Corner South Street and Calley Drive Leeming WA 6149 Postal Address: P.O. Box 4048 Success 6964 Telephone: (08) 9310 8777

Email: yaz.mubarakai@mp.wa.gov.au



Cr David Bolt

Shire President - City of Mandurah

David Bolt is a strong advocate of renewable energy solutions and the expansion and development of operations at the Murray Field airport servicing the Mandurah region.

Term expires October 2023

Telephone: 0400 123 268 Email:

dbolt@murraycouncillor.wa.gov.au

<https://www.murray.wa.gov.au/Shire-and-Council/Councillors/CrDavid-Bolt>



Joshua Portlock
CTO and Co Founder

Co-Founder and Innovation Director of Electro.Aero and Electro Nautic, Josh has over a dozen years of experience developing and commercializing electric propulsion and autonomous systems. He is an entrepreneur and robotics engineer who has specialised in electric propulsion technologies.

josh@electro.aero

<https://www.electro.aero/about>

Supporting businesses



Rottnest Air Taxi

Rottnest air taxi operates air taxi services to the island and will be a partner in our commercial electric aircraft operations to the Wadjemup Airport. As such, owner/operator Frank Stynman is supportive of immediate test operations as proposed in the above document to pave the way for commercial zero emissions, low noise air taxi services to the island.



Royal Aero Club

The Royal Aero Club of WA are pro electric and host the southern electric aviation charge node at Murray Field airport near Mandurah. They are in support of an electric charge node at Rottnest island for future use for their members flying electric to the island.



Samphire Rottnest

Peter Prindeville, of Samphire Rottnest Island, is supportive of electric aviation operations at the island for the benefits of decarbonised transport solutions to the beautiful eco resort for the patrons of Samphire and other hotels and island accommodation providers.

